



Happiness ● Excellence ● Ambition ● Respect ● Togetherness

Our values are at the HEART of our school.





Dear Parent/Guardian

Washingwell Primary School prides itself on being a school that provides a wide and varied curriculum which offers our diverse school community the opportunity to play, learn and grow in an amazing setting. Our uniqueness lies in our route to excellence, our commitment to getting it right for each and every child on an individual, class and whole school level. Our uniqueness is 'us'. By us, I mean all those who contribute to creating a whole community - staff, children, parents and governors. It makes 'us' special, different and determined to be the best we can possibly be for all those who share in our vision.

I am proud to be the Head Teacher of Washingwell Primary School and look forward to showing you just how great we are.

Once you have read our prospectus, you are more than welcome to come and have a look around our school, meet the staff and talk to the children. Please contact us:

Washingwell Community Primary School, Bucks Hill View, Whickham, NE16 4RB
Tel: 0191 4884400
Email: admin@washingwell.org.uk
Twitter: [@washingwellsch](https://twitter.com/washingwellsch)
Facebook: [Washingwell Community Primary School](https://www.facebook.com/Washingwell-Community-Primary-School)

Mrs Alison Hall
Head Teacher

***'Where children realise their full potential in a safe, secure and happy place
where all achievement is valued.'***

Our values are at the **HEART** of our school

Happiness: We value the happiness of all those who play a part in our school community.

Excellence: Drives our choices, our effort and our vision.

Ambition: Gives purpose to the work of our school.

Respect: For each other allows us to work together happily.

Togetherness: Demonstrates that we understand how we are stronger together.

Early Years

Children in our Early Years Unit follow the Early Years Foundation Stage Curriculum and Birth to 5 Matters which allow staff to plan personalised learning experiences based around the Early Learning Goals which encompass prime areas and specific areas:

Prime Areas:

Communication and Language

Physical Development

Personal, Social and Emotional Development

Specific Areas:

Literacy

Mathematics

Understanding the World

Expressive Arts and Design

We host an extensive induction programme for children entering our Reception and Nursery Class each year which allows them to familiarise themselves with staff and their new surroundings at a very early stage. Further information about transition in to Reception and Nursery class is provided at our New Intake Parent Meeting in May of each year although if you have any specific queries, please do not hesitate to contact the school on 0191 4884400.



Curriculum

At Washingwell, we offer a full and varied curriculum, which incorporates the requirements of the Early Years Foundation Stage (EYFS) curriculum and the National Curriculum for KS1 and KS2.

The school curriculum is reviewed regularly in order to meet the needs of the pupils. All pupils are catered for individually and work is prepared for them at an appropriate level. This enables children to develop and make progress at their own rate. Children are taught in various ways, as a whole class, in similar ability groups, mixed ability groups or individually.

Our Curriculum is varied in both traditional and child centred methods, which caters for the individual needs and capabilities of each child.

At Washingwell Community Primary School, we have extensive outdoor grounds and we like to make use of these at every possible opportunity to enhance the curriculum, engage children in their learning and develop a love of the outdoors.



For curriculum information on specific subjects, please visit our school website www.washingwell.org.uk

Flex It Friday

Each Friday children come to school dressed in more practical clothing (school hoodie, jogging bottoms and trainers) to participate in a creative curriculum as part of Flex It Friday. We are delighted to be working with specialists from Computing 4 Kids NE, Lingotots, Gateshead Music Service, and the Schools Sports Partnership. Children thoroughly enjoy their much more creative, outdoor and active learning each week.



Family Support Worker

'Working with families to connect home and school'

Mrs Tough is our school Family Support Worker.

Mrs Tough is here to support you as parents/carers and your child, with issues at home and school that are affecting their wellbeing, and ultimately their ability to learn and participate in school life.



Her role is to provide pastoral support to families. This may be by providing a listening ear, offering support and advice, or by signposting you to relevant agencies or other colleagues in school.

Enabling children to enjoy their time at Washingwell is a priority of all staff and the Family Support Worker role is to support this aim.

Educational Visits

We strongly believe that educational visits out of school play an important part in consolidating your child's learning in specific areas and enrich the curriculum. Educational visits may incur entrance or transport costs, and in such cases, voluntary contributions from parents are essential and greatly appreciated. No child will be excluded from participating in an activity during the school day because of a lack of parental contribution, however, the activity may not take place if there is a shortfall of funds.

In addition, the following annual residential visits take place:

Year 4 – Two night residential visit to Kingswood; Year 5 – Two night residential visit to York; Year 6 – Two night residential visit to Edinburgh.



Special Educational Needs and Disabilities (SEND)

All pupils with SEND at Washingwell Community Primary School have their needs addressed through a broad and balanced education. We ensure that pupils with SEND engage in all the regular activities of our school as far as is reasonably practicable.

In meeting our responsibilities, we have regard to the SEND Code of Practice. A copy of our SEND Policy is available to download from our school website along with the Gateshead Council's Local Offer www.washingwell.org.uk.

The member of staff with responsibility for SEND (SENDCo) is Mrs McCue.

Extra-Curricular Clubs

At Washingwell, children can choose from a vast array of after school and lunchtime extra-curricular clubs on a termly basis.

Clubs are ran by staff, external providers and community volunteers which allows us to provide a wide variety of clubs allowing children to explore different interests. Some clubs are free of charge, but some external providers make a charge – you will be notified of any charges before you sign up to the club.

Recent Clubs include Arts and Crafts, Karate, Football, Outdoor Fun, Fit Kids, Photography, Lego and many more!

Community

The Washingwell School community is at the heart of our school values.

In school, our extensive PSHE programme creates opportunities for children across the school to work together, supported by an elected school council. Parents, specialists, community groups and volunteers enhance the provision for all our children and our children regularly represent Washingwell at local festivals and community events.

Most recently we have participated in the following community events:

Macmillan Coffee Morning

Every September we host a Coffee Morning in aid of Macmillan Cancer Support. Our School Councillor's do a fantastic job at organising this event.



We also support many National charities and awareness days which are representative of our school community.

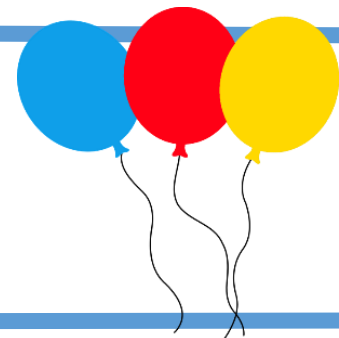


Washingwell FUNdraisers

Washingwell FUNdraisers

- Putting the 'fun' in to fundraising -

Registered Charity Number: 1166523



Washingwell FUNdraiser's are a group of parents who actively support the school in raising funds to enhance the educational advancement of children attending Washingwell Community Primary School.

Washingwell FUNdraiser's became a registered charity in April 2016 and their support is vital in supporting us provide the extras for our children. Fundraising events include Summer and Winter Fairs, Non Uniform Days, tuck shops, Bonfire Extravaganza.

The FUNdraisers always welcome new members – if you would like to join or find out further information, please email fundraisers@washingwell.org.uk.

Safeguarding and Child Protection

The Governing Body take seriously its responsibility to safeguard and promote the welfare of children and to work together with other agencies to ensure adequate arrangements within our setting to identify, assess and support those children who are suffering harm. We recognise that all adults, including temporary staff, volunteers, students, supply staff and Governors have a full and active part to play in protecting our children from harm and that the child's welfare is our paramount concern. Mrs Hall; Head Teacher is the Designated Person for Child Protection.

Complaints Procedure

There may be instances when you are unhappy or unsure about an aspect of the school. Please come to speak to us as early as possible. In most cases, worries or complaints can be sorted out quickly and easily in discussion with the class teacher or you may speak to the Head Teacher. Following consultation and if you are still dissatisfied you may wish to make a formal complaint via the Chair of Governors. A copy of our school Complaints Policy can be found on our school website www.washingwell.org.uk.

Communication

Washingwell Community Primary School use 'Operoo' to communicate with parents electronically. Daily updates of upcoming events and photographs of children's learning in school are posted on our school Facebook and Twitter sites, and each class has their own blog on our school website www.washingwell.org.uk. Follow us now on Facebook and Twitter!

Reporting to Parents

We want to keep parents informed about how well their child is doing in school. Alongside the many informal opportunities each day, we organise the following to help you keep in touch with what your child is learning and the progress they are making:

- Individual Parent Consultation Meetings with your child's class teacher in the Autumn and Spring terms.
 - Annual written report in the Summer term
 - Showcase Events
 - Regular Open Days for specific events e.g. Science Week, Sports Day etc.
 - Celebration Assemblies
 - Termly SEND Review Meetings
-

Admissions Policy and Procedure

Washingwell Community Primary School is a one form entry school and has the capacity to accept 30 children in each class (Reception – Year 6) and we have a 26 place Nursery.

Places in Reception class and throughout school are allocated in accordance with Gateshead Council's Admissions Policy – a copy can be downloaded from our school website www.washingwell.org.uk. Places in Nursery are managed by the school and a copy of our admissions form and policy can be found on our school website.

Attendance and Punctuality

Good attendance and punctuality is essential for all children and therefore attendance data is carefully monitored. If your child is unwell, please telephone the school office on 0191 4884400 before 9.20am on the first day of illness. If you know in advance that your child is going to be absent due to medical appointments, please inform the school office so that absences may be correctly coded.

Class attendance data is published as part of our weekly newsletter. If, for exceptional reasons, leave of absence is necessary during term time, a leave of absence form (available from the school office or to download from the school website) must be completed and returned at least two weeks before the absence is due to begin. For further information, our Attendance and Punctuality Policy is available to download on our school website www.washingwell.org.uk.

Social Media

We take seriously our responsibility to keep staff and children safe from any form of violence or harassment, physical, written or verbal. Positive behaviour is expected from all parents and carers. They are expected to behave appropriately in their use of social media and set a good example. Sanctions can be implemented by the school against any parent or carer who has published comments relating to any child, member of staff or the school that would bring them in to disrepute. Complaints should be brought to the attention of the school in an appropriate manner and followed up in line with our complaints policy.

Behaviour

At Washingwell Community Primary School we work towards standards of behaviour based on the basic principles of honesty, respect, consideration and responsibility - acceptable standards of behaviour are those which reflect these principles.

The adults encountered by the children at school have an important responsibility to model high standards of behaviour, both in their dealings with the children and with each other, as their example has an important influence on the children.

As adults we aim to:

- create a positive climate with realistic expectations
 - emphasise the importance of being valued as an individual within the group
 - promote, through example, honesty and courtesy
-

- provide a caring and effective learning environment
- encourage relationships based on kindness, respect and understanding of the needs of others
- ensure fair treatment for all regardless of age, gender, race, ability and disability
- show appreciation of the efforts and contribution of all

Sanctions are in place for when a child does not follow our school Behaviour Policy. Further details and a full copy of the policy can be downloaded from our website www.washingwell.org.uk.

Uniform

Through our uniform we emphasise being part of a whole team. It comprises of the following:

For children in Nursery and Reception our school uniform consists of:

- Navy/black jogging bottoms / leggings
- Royal blue t-shirt with logo
- Royal blue hoodie with logo
- Black/Navy Trainers with velcro fastenings
- Blue school book bag without strap.

Due to Nursery and Reception children spending significant curriculum time in the outdoor environment, it is expected that parents will also provide the following items to remain in school at all times:

- Wellies
- Hat
- Gloves
- Waterproof trousers and jacket.

For children in Years 1 – 6 our school uniform consists of:

Boys	Girls
<ul style="list-style-type: none"> - Grey or black trousers - Royal blue school sweatshirt with logo - White polo shirt - Black shoes 	<ul style="list-style-type: none"> - Grey or black skirt, trousers or pinafore - Royal blue school sweatshirt or cardigan with logo - White polo shirt - Blue and white checked summer dresses - Flat black shoes with closed toes and straps / flat black boots for winter
<p>KS1 – Blue school book bag without strap.</p> <p>KS2 – Blue school book bag with strap or blue school ruck sack.</p> <p>During winter months children may wear wellingtons or boots to school but these must be stored in a bag and indoor shoes must be worn whilst inside the building.</p>	

PE Kit / Flex It Friday's

Indoor	Outdoor
<ul style="list-style-type: none">- Navy Shorts- Royal blue t-shirt with logo- Black plimsoles	<ul style="list-style-type: none">- Navy/black jogging bottoms / leggings- Royal blue t-shirt with logo- Royal blue hoodie with logo- Trainers

Children should come to school in their Flex-it-Friday uniform every Friday. They should also wear this uniform on the days which they have PE. PE timetables will be issued on a termly basis on the school newsletter, via class emails and also through class termly overviews which can be found on our 'Class Pages' on our school website www.washingwell.org.uk

Purchasing School Uniform

Washingwell Primary School uniform items may be purchased from Logos Unlimited (online via their website or directly from their shop).

Logos Unlimited, 1 Sands Industrial Estate, Swalwell, Newcastle, NE16 3DJ (behind Lidl)

0191 4884300, www.logos-unlimited.co.uk

Forest School

At Washingwell Primary School we believe that young people should be given the opportunity to experience the world beyond the classroom, we are excited to promote the Forest School ethos into our school.

We aim to use the natural outdoor environment to offer the children an insight into the holistic Forest School approach. We aim to:

- Allow children to develop their independence.
- Build self-esteem and self-confidence.
- Initiate learning for themselves.
- Manage and control risks independently.
- Develop social and communication skills.
- Promote learning through exploration and discovery.

In Early Years and KS1 the curriculum incorporates weekly forest school sessions. In KS2, the skills built upon through project driven Forest School activities.

Before and After School Provision

Washingwell Whizz Kids opened in February 2015 and has been going from strength to strength ever since.

Breakfast Club provision opens at 7.30am each day and After School Club is open until 5.45pm.

Breakfast is served to those children that are dropped off at 7.30am and 8.00am. We have a daily



breakfast menu available consisting of a selection of cereals, toast, fruit and yogurts. We may offer special breakfast in line with celebrations or events e.g. pancake day. In these instances, the daily breakfast menu will continue to be available.

A snack is offered to children who remain in the after school club after 4.30pm and fulfils the criteria of the School Food Standards for Food Served outside of School Hours (January 2015)

Breakfast Club Costs

£5.00 per session

After School Club Costs

£10.00 per session



Website

For further information about our school, please visit our school website www.washingwell.org.uk.

To keep up to date with the latest news and events from Washingwell Community Primary School please follow us on Twitter [@washingwellsch](https://twitter.com/washingwellsch) and Facebook.